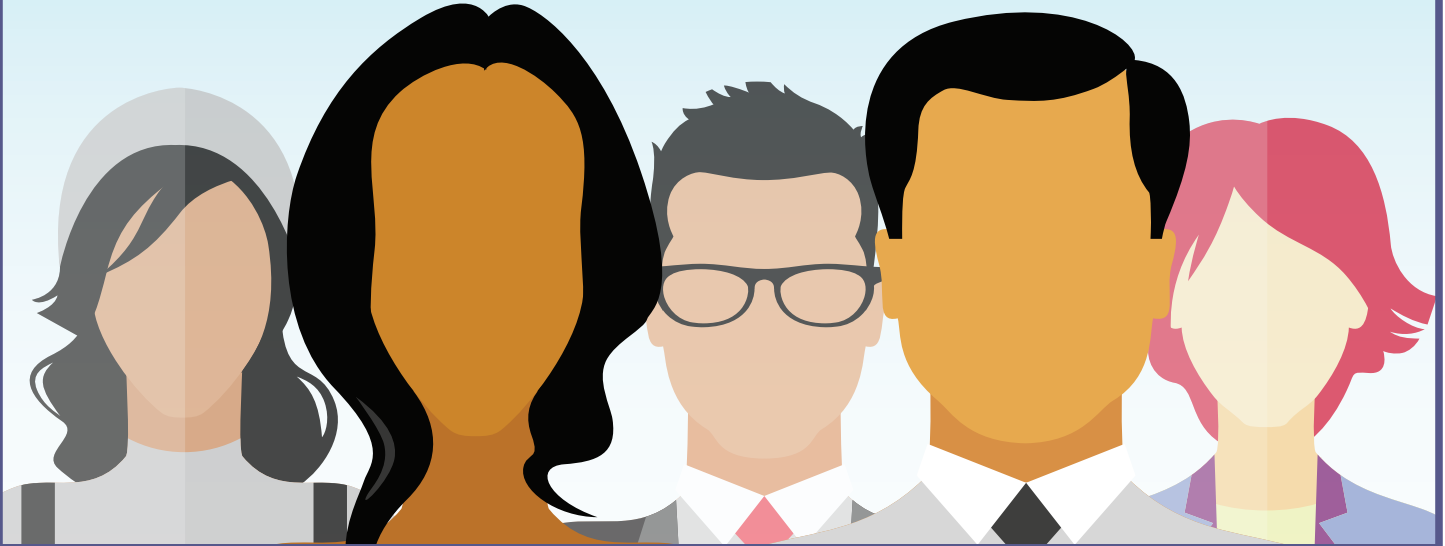




IPRO ESRD Network of New England Patient Advisory Committee (PAC) Face-to-Face Summit



IPRO ESRD Network of New England invites one patient representative from each dialysis facility to attend the annual Patient Advisory Committee (PAC) face-to-face summit. This summit is a fun opportunity to meet and collaborate in person with peers. A kidney-friendly brunch will be provided.

Date and time: Sunday, August 6, 2017 from 11:00 am to 2:00 pm

Location: Southbridge Hotel and Conference Center
14 Mechanic Street, Southbridge, MA 01550

For more information contact:

Brittney Jackson, LMSW, MBA

Patient Services Director
(203)-285-1213

bjackson@nw1.esrd.net

or

Merari Rosario, MHA

Community Outreach Coordinator
(203)-285-1223

mrosario@nw1.esrd.net

For registration information please visit the Network website,
<http://network1.esrd.ipro.org/events>



To file a grievance, please contact us:

IPRO End-Stage Renal Disease Network of New England
1952 Whitney Avenue, 2nd Floor, Hamden, CT 06517

Patient Toll-free: (866) 286-3773 (Patients only) • Main: (203) 387-9332

Fax: (203) 389-9902 • E-mail: info@nw1.esrd.net

Web: <http://network1.esrd.ipro.org>